

# SHARP®

## HIGH-SPEED MONOCHROME WORKGROUP DOCUMENT SYSTEMS



"Most Secure MFP Range"  
6th Consecutive Year  
Award 2009



"Best Device Management  
and Integration Technology for  
MFP Series" Award 2009



### MX-M753

...High-Speed

## MX-M753

Precision engineered to help increase workflow efficiency and provide exceptional image quality, Sharp's new MX High-Speed Monochrome Series workgroup document systems take you to the next level in MFP performance and productivity. A large customizable, **high resolution touch-screen color display** with **graphical menu navigation** and a **full-size retractable keyboard** to simplify data entry are just two of the many advanced features offered by these new models. The powerful 800 MHz



true multi-tasking controller enables MX users to save time and money while producing professional documents in-house—**robust performance** that is also economical. Sharp's advanced device management makes it easy to **control usage and costs**. With the latest **Sharp OSA®** development platform, integration with network applications has never been easier. And, to help safeguard the confidentiality of your intellectual property, Sharp's industry-leading security suite is second to none.



FLEXIBILITY  
PRODUCTIVITY  
INTEGRATION  
USER-FRIENDLY



Sharp's new MX High-Speed Monochrome Series workgroup document systems offer advanced features to enhance productivity and improve workflow.

## ENGINEERED FOR PERFORMANCE

- Powerful 800 MHz **true multi-tasking** document system
- Large, **high resolution touch-screen** color display with customizable home page
- Advanced second generation micro-fine toner technology offers crisp, **high quality images** page after page
- Standard 150-sheet duplexing single pass document feeder with color **Scan<sup>2</sup>** technology
- **1200 x 1200 dpi** printing provides clear, crisp images, even on jobs with fine detail
- Network interface supports **gigabit ethernet**
- Industry-leading **ImageSEND<sup>™</sup>** function with **blank-page skip** scans documents to e-mail, network folders, USB devices and more (standard on N models)<sup>1</sup>
- Robust 38GB **document filing system** with **thumbnail view** and **image preview** features
- Standard PCL<sup>®</sup>6/PCL5e (N models) **printing system** with **direct print** function and available Postscript<sup>®</sup> 3<sup>™</sup> and Windows<sup>®</sup> XPS options
- Sharp OSA<sup>®</sup> development platform with standard application communication module and external accounting module enables businesses to streamline document workflow and **enhance productivity** (standard on N models)<sup>2</sup>
- ImageSEND function scans documents at up to **75 images per minute** in both black and color (standard on N models)
- **Flexible paper handling** including 100-sheet stapler finisher option
- On-board paper storage capacity for **up to 6,600 sheets** with options
- **Super G3 fax** option with intelligent inbound routing
- Supports Sharp's latest **award-winning** multi-level document and network **security suite**, which conforms to the new **IEEE-2600<sup>™</sup> - 2008 security standard** for MFP devices<sup>2</sup>
- Advanced **web-based device management** offers both administrator level and user level login control
- **Remote front panel feature** allows users and administrators to view and control machine operations from a PC workstation
- **Environmentally-friendly design** offers low power consumption and long-life parts

<sup>1</sup>Blank-page skip feature not available in some models.

<sup>2</sup>Some features may require optional equipment.



...Smart Strategy

## INNOVATION THAT BOOSTS PRODUCTIVITY



Standard retractable keyboard makes data entry quick and easy (N models only).



Large 8.5" (diagonally measured), high-resolution touch-screen display.



Paper trays with large, durable handles make it easy to load paper.

Get on the fast track in today's competitive business environment with Sharp's powerful and dynamic MX High-Speed Monochrome Series.

### Award-winning Retractable Keyboard Offers Added Convenience

For workgroups that perform a significant amount of data entry, the new MX High-Speed Monochrome Series document systems include a standard retractable keyboard (N models). Designed to simplify e-mail address and subject line entries, as well as repetitive scanning tasks and user authentication, the built-in keyboard offers users a familiar ergonomic interface.

### The Flexibility and Performance You Need

With a large 8.5" (diagonally measured) **customizable high-resolution touch-screen color display** and a powerful 800 MHz **multi-tasking controller**, the new MX-M753 high-speed workgroup document systems can help elevate your office productivity to the next level. The intuitive menu navigation system with razor-sharp graphics makes operating the MX simple and easy. With Sharp's true multi-tasking controller, complex print jobs can be processed quickly, even while documents are being scanned. But that's just the beginning—with a **standard 150-sheet dual-head scanning document feeder**, automatic duplexing, electronic sorting and integrated offset stacking, you'll complete even large jobs in a snap.

### High Quality Output You Can Rely On

The new MX High-Speed Monochrome Series document systems combine Sharp's second generation micro-fine toner technology with **1200 x 1200 dpi** print resolution to produce documents with crisp, clear images and high quality detail.

### Reliability Your Business Can Depend On

Sharp's MX High-Speed Monochrome workgroup document systems deliver professional performance and optimal productivity to satisfy your daily production needs. Copy/print **speeds up to 75 ppm** help you meet project deadlines with time to spare. The flexible paper handling system can feed up to 110 lb index stock through the paper trays. With available on-line paper capacity of up to 6,600 sheets, the new MX High-Speed Monochrome Series is ready when you are.

# ADVANCED WORKFLOW MANAGEMENT



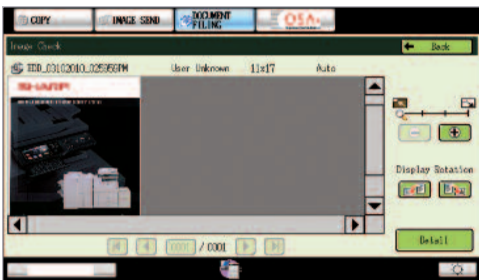
For optimal productivity, Sharp offers award-winning Color Scan² technology (standard on N models).



USB 2.0 port is located on the front panel of the machine for easy access.



Sharp's easy-to-use document filing system with Thumbnail Preview.



Sharp's Image Check feature allows users to preview stored documents at the device.

User-friendly features help increase document workflow efficiency and productivity to optimize day-to-day operations.

## Speed up your Workflow with Sharp's Innovative Color Scan²™ technology

Sharp's advanced 150-sheet document feeder with dual reading heads can scan 2-sided documents in a single pass, dramatically improving productivity and reliability. Now you can process even large-scale jobs with incredible efficiency.



## A True Multi-Tasking Document System

The new MX-M753 high-speed monochrome series features a **high-performance, 800 MHz multi-tasking controller** that delivers copy, fax and print jobs continuously for optimum efficiency.\* Some controllers only perform one operation at a time. But the MX continually processes incoming jobs even while existing jobs are output. The result? A workflow that virtually never slows down—even at crunch time.

## Direct USB Printing Adds Convenience and Portability

With Direct USB printing, users can print files in a variety of popular formats directly from USB memory devices such as a ThumbDrive™ or ClipDrive™.\* Need to print PDF brochures in a hurry for a big meeting? It's easy with the MX High-Speed Monochrome Series. Just plug in your portable USB memory device, select the file, and print.\*

## Innovative Document Filing

Sharp's easy-to-use **Document Filing System** provides up to 38GB of hard drive space to store frequently used files such as forms, reports and other commonly used documents for printing and distribution. Plus, with private storage features and **PIN-code access**, you can store sensitive documents securely. And, with Sharp's **Quick File Folder**, you can temporarily store documents with fast, one-touch simplicity. An easy-to-use backup system helps ensure your files are safe.

To make managing all of your stored jobs simple, the MX color touch-screen display offers an intuitive **thumbnail view** to allow walk-up users to easily locate stored jobs even if they don't know the file name. For added convenience, an advanced **Image Check** feature allows selected files to be previewed on-screen—walk-up users can even zoom in, change print attributes or move a file to another folder. With storage capacity for up to 5,500 pages, your document workflow can improve significantly.

## Get Professional Results with Advanced Finishing

The MX-M753 high-speed monochrome series offer a choice of three high-performance finishers that can give your documents a professional look and feel. Choose from a floor-standing saddle stitch finisher, a 50-sheet stapler finisher or a 100-sheet stapler finisher. All three models offer three-position stapling and an optional 3-hole punch unit.



MX-M753N with saddle stitch finisher



MX-M753N with 50-sheet stapler finisher



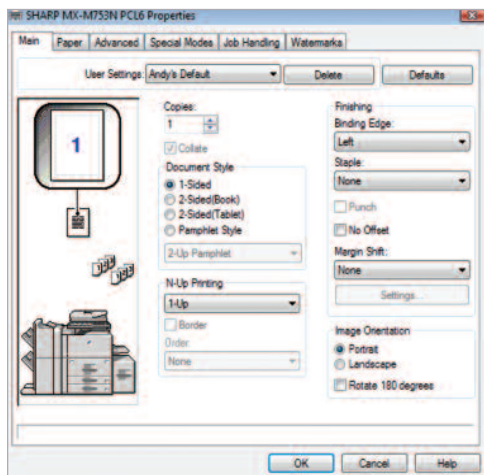
MX-M753N with 100-sheet stapler finisher

\*Some features may require optional equipment.

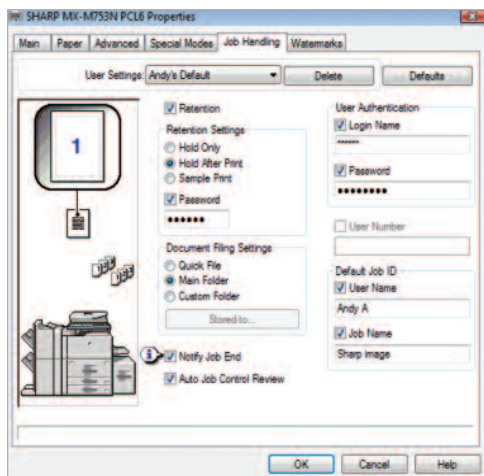


...Focus on Efficiency

## PRECISION ENGINEERED, INNOVATIVE FEATURES



Sharp's intuitive print drivers make accessing all of the MX print features quick and easy.



With Sharp's advanced job handling features, users can easily retain print jobs on the MX hard drive for reprinting at a later date.\*

Optimize performance with robust, easy-to-use print drivers to help maximize document workflow efficiency in any business environment.

### Exceptional Print Quality with Professional Output

With the new MX High-Speed Monochrome Series, your business can produce razor-sharp B&W documents. Plus, with **1200 x 1200 dpi resolution**, even documents with fine detail will look great! Sharp's easy-to-use print drivers allow users to set up even complex jobs with just a few mouse clicks. Simple plug-n-play operation makes it easy to take advantage of advanced feature sets in a snap. Special functions like Tab Paper Print, Chapter Inserts and Carbon Copy Print allow you to quickly produce a variety of document types.

The **optional Postscript® driver** delivers extensive finishing features that include three-position stapling for up to 100 sheets, saddle stitch finishing for up to 15 ledger size sheets (60 pages) and three-hole punching.\* Now you can produce professional quality documents from your desktop that look so good, everyone will think you had them sent out to a printer.

### Advanced Job Retention Features Enhance Productivity\*

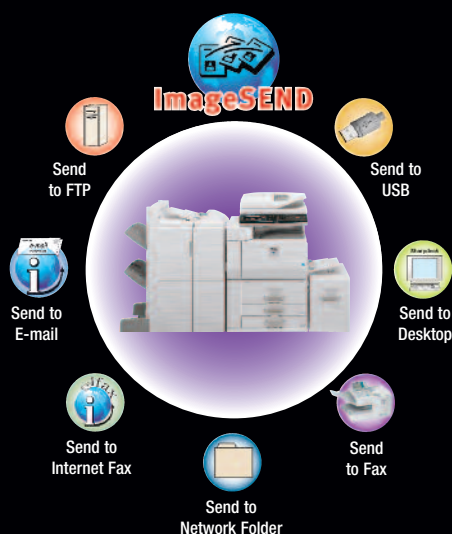
Sharp's innovative printing system makes it easy for any business to store and archive print jobs. With the ability to retain jobs on the MX hard drive, documents can be stored and reprinted again and again by walk-up users or through the **embedded web page**. Print jobs can even be sent to the MX for archiving without printing them! Need to store sensitive documents? No problem! Users can assign a password right from the print driver or from the MX operation panel!



\*Some features may require optional equipment.

...Accelerated Workflow

## FLEXIBLE DOCUMENT DISTRIBUTION



In today's fast-moving business environments, you need every advantage you can get—Sharp's new MX High-Speed systems give you the edge.

### Integrated Network Scanning

With Sharp's powerful **ImageSend** technology, you get one-touch distribution features that centralize document workflow, reduce mail costs and save time. With up to **seven destinations**—E-mail, Desktop, FTP, Network Folders (SMB), USB, Fax and Internet Fax—getting your document where it needs to go is as easy as pushing a button. High-volume workgroups will appreciate the **Send to Group** mode that allows you to mix group broadcast to E-mail, Fax, and Internet Fax for increased efficiency.\*

### Convenient E-mail Distribution

With Lightweight Directory Access Protocol (LDAP), there's no need to manually enter a recipient's complete e-mail address. Simply enter the first few characters and the MX automatically searches and displays a list of matching names. **Unique File Naming** allows users to enter specific file names with custom subject fields, so it's easier than ever to recall files when you need them. And, with **Sharpdesk®** personal document management software, users can easily organize their scanned documents and integrate them into everyday workflow.\*

### Sharpdesk Software for Total Document Management

Powerful, flexible and intuitive, Sharpdesk personal document management software enables you to easily manage all of your scanned documents. Easy-to-use tools help you organize, edit, even combine scanned files, for maximum productivity. The innovative **Search and Index feature** provides sophisticated tools that enable you to retrieve archived documents with incredible simplicity.

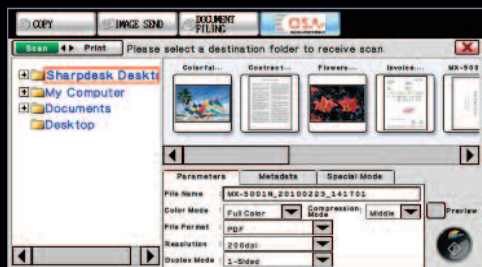
### Integrated Super G3 Fax and Internet Fax

Add powerful facsimile capability to your MX High-Speed Monochrome Series with the optional Super G3 fax module, which offers advanced features such as automatic stapled/copied receptions and Inbound Fax Routing to e-mail. Sharp's innovative **PC fax driver** enables users to send fax documents right from their desktop. For Internet Fax operation, add the optional B&W Internet Fax expansion kit.

**SUPER  
G3**




Intuitive desktop display features thumbnail viewing and file search allows searching by file name, keyword, or thumbnail.



The Sharpdesk Connector for Sharp OSA v 3.x enabled MFPs enhances scan workflow options.

\*Some features may require optional equipment.





*...Simplified Integration*

## GET MORE OUT OF NETWORK APPLICATIONS



### **Sharp OSA® technology at a glance**

- Automate tasks and save time with seamless integration between the MX-M753 and network applications
- Centralized applications minimize set-up and installation on multiple Sharp products
- Virtually eliminates repetitive tasks and streamlines workflow, increasing efficiency
- Maximize your return on investment with tighter integration among IT assets
- Industry standard programming leads to faster deployment of new solutions

To help streamline document workflow and enhance productivity, the new MX High-Speed Monochrome Series supports the Sharp OSA platform.

### **Versatile Application Integration**

The MX-M753 high-speed monochrome document systems provide powerful functionality for your business so you can immediately leverage your previous investments in data management infrastructure.\* While others are limited to a small circle of productivity, the innovative Sharp OSA development platform, allows users to leverage the power of their back-end systems right from the control panel. It's really a new way of thinking with "power at the panel" for automation of tasks and a streamlined workflow.

### **Save Time, Increase Efficiency**

You'll save time and increase the efficiency of everyday tasks with Sharp OSA technology because it can be virtually seamless to the user. Any MX-M753 series document system anywhere in the organization can display choices that were once only available on a desktop PC. With one-touch access to business applications via Sharp OSA integration, you can start and finish a document distribution task without worry.

### **Complement Your Infrastructure**

The Sharp OSA development platform is the logical choice as a complement to your existing infrastructure. With the **standard application communication module and external accounting module** (standard on N models), the new MX High-Speed Monochrome Series becomes the gateway to providing fast, flexible access to documents and applications... no matter where you are in the office. Optionally you can get the controlled access and tracking ability you require with tighter integration capabilities for network security and accounting applications. With such comprehensive control, you'll be able to manage your document workflow easily, efficiently, and more securely.

### **Customized Technology**

Sharp OSA technology also provides customization. With the ability to personalize applications and processes specific to your business, Sharp OSA technology can help eliminate redundancy and streamline workflow, helping to save time and optimize productivity. And since Sharp OSA technology utilizes industry-standard network protocols such as SOAP, XML, and XHTML, third party software developers can deliver customized solutions to your business faster than ever.

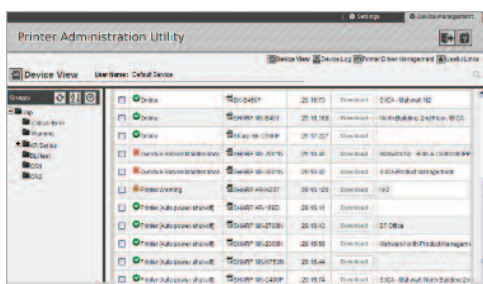
\*Some features may require optional equipment.





...Streamlined Operation

## ADVANCED DEVICE MANAGEMENT



Printer Administration Utility Suite.

Engineered with you in mind, the MX High-Speed Monochrome Series combines easy-to-use integrated software with robust capabilities.

### The Sharp Administration Utility Suite

Sharp's Administration Utility Suite takes management of your MX-M753 series document system to the next level. This easy-to-use software allows you to take control of the versatile system features and simplifies installation and management.



Remote Device Management Suite.

- With **Printer Status Monitor**, network users can view printer conditions, check paper levels, toner, and more—all through an easy-to-use interface.
- With Sharp's advanced **Printer Administration Utility**, administrators can easily manage the setup, configuration, device settings, cloning and more! New advanced features such as **Remote Front Panel** allow administrators and support personnel to view and control the LCD panel of the machine remotely from virtually any PC on the network! \* Plus, with event-driven, real-time service alerts, administrators and supervisors can achieve higher productivity. Now, it is easier than ever to view, click counts, history reports and more.
- Experience the convenience of an **Embedded Web Page** right from your desktop! This advanced web-based management tool allows users to create and manage their own network scanning destinations, profiles and web-links. Administrators can access device settings, account information and security settings.

### Take Charge of Usage and Costs

With Sharp's **device management system**, administrators and supervisors can define user groups on the MX to manage and restrict features, such as copying, scanning or printing. Easily set up a custom user group to manage page counts (copy, print, scan or fax operations). The MX-M753 series document systems can store **profiles for up to 1,000 users**.

### 24/7 Training with My Sharp

Managing all of the advanced features of your Sharp product is simple and easy. Ask your Authorized Sharp Dealer about **My Sharp**. This dedicated customer training website is customized to your MX-M753 series document system and allows you to locate resources and find information specific to your configuration, truly helping you maximize your investment.



Remote Front Panel.



# HEIGHTENED SECURITY



"Most Secure MFP  
Range" Award—6th  
Consecutive Year

## PRIVACY

## AUTHORIZATION

## CONFIDENTIALITY

## PROTECTION

### Innovative document and device protection helps ensure confidentiality.

To help protect your data, the new MX High-Speed Monochrome Series offers several layers of security, making Sharp the optimum choice to protect employee privacy and intellectual property. As the leader in office equipment security, Sharp makes it easy for virtually any business or government entity to safely deploy digital copying, printing, scanning and faxing.



#### Authority Groups and Access Control

Advanced account management enables administrators to set authority groups for access to features of the new MX High-Speed Monochrome Series. Administrators can control which department, for instance, has full access to copying, printing, scanning and/or fax. Walk up users enter a code, Local Name and Password, or LDAP User Authentication to access their features assigned to their group. Users can also login utilizing a human interface device (HID) such as a Smartcard or Common Access Card (CAC).\*



#### Data Erase and Encryption\*

To help protect your data, the new MX High-Speed Monochrome Series offers an optional data security kit that encrypts document data using **AES (Advanced Encryption Standard) 256-bit encryption**. Additionally, the data security kit erases the temporary memory on the hard drive by overwriting the encrypted data up to seven times, offering an unprecedented level of assurance. Additionally, the data security kits for these models comply to the new IEEE-2600-2008 security standard for MFP devices. This new standard specifies security requirements and provides a new international reference to assess contemporary MFP security.



#### Network Scanning Access

To help protect your network from unauthorized e-mail communications, the new MX High-Speed Monochrome Series supports **User Authentication**, requiring users to login before performing any network scanning operations.



#### Control Device Access Over the Network

To help restrict access to the device over the network, the new MX High-Speed Monochrome Series offers IPsec, SMB and extended support for **SSL Encryption** (Secure Sockets Layer), **IP/MAC address filtering**, IEEE 802.1x authentication, Common Access Card (CAC) support, protocol enable/disable and port management for maximum security.



#### Documents Remain Confidential

To help protect your printed documents from unauthorized viewing, the new MX High-Speed Monochrome Series offers encrypted PDF files for printing and scanning as well as **Confidential Printing** that requires users to enter a PIN code or use their Access Card in order to print a queued document. Additionally, **Secure Fax Release** ensures received fax documents are held in memory until an authorized user enters a PIN code. So compliance with healthcare regulations such as HIPAA is easier.



#### Tracking and Auditing Information

Legislation and industry policies require companies to be more aware of information flow from their offices. Sharp offers both built-in and additional hardware/software which allows users to control, access and track usage of each device on the network.

These scalable security offerings aim to protect your intellectual property, preserve confidential information and help your business to meet regulatory requirements, such as the Health Insurance Portability and Accountability Act (HIPAA), and the Gramm Leach Bliley Act (GLB). For additional information visit: [www.sharppusa.com/security](http://www.sharppusa.com/security).

\*Some features may require optional equipment.





...Ecological Commitment

## ENVIRONMENTALLY FRIENDLY



Sharp's ongoing commitment and dedication to developing eco-friendly document systems set a high standard for the industry.

### Designed with a Strong Commitment to Protecting the Environment

The new MX High-Speed Monochrome Series document systems utilize Sharp's second generation micro-fine toner technology, which offers a lower consumption rate than conventional toners. This also results in less packaging material and longer replacement intervals. Additionally, all Sharp supplies are packaged using fully recyclable materials. Power consumption on the new MX High-Speed Monochrome Series is among the lowest in the industry and supports two different energy saving modes to reduce or shut off power after a set interval. The MX-M753 document systems belong to the ENERGY STAR® program, and RoHS program.

### An Economical, Low Maintenance Document System That Makes Sense

The new MX High-Speed Monochrome Series is designed to accommodate both large and small office environments. With a compact wingless design, the footprint of each base model is less than 29" x 27". Our new long-life consumable parts and supplies minimize service intervals and down time, resulting in lower operating costs.

### Sharp's Environmental Leadership

Reinforcing our commitment to the environment, in 2007, Sharp received the *Excellence in Partnership Green Contractor Award* and the **Evergreen Award** from the U.S. Government's General Services Administration and the Coalition for Government Procurement.

The Green Contractor Award recognizes contractors that have made the best overall commitment to the environment by offering environmentally friendly products and services or adhering to environmentally sound manufacturing procedures. The Evergreen Award identifies environmentally-friendly businesses and their efforts in recycling and waste reduction practices. Please visit [www.sharppusa.com/environment](http://www.sharppusa.com/environment) to learn more about our environmental leadership.

# MX-M753 SPECIFICATIONS

## Main Specifications

<b>MX-M753N</b>	Includes 8.5" Color Display, Standard Copying, PCL6 Network Printing, Network Color Scanning, Document Filing, 150-sheet DSPF, Auto Duplex, 2000-sheet tandem paper drawer (letter), 2 x 500-sheet paper drawers, 100-sheet bypass tray & 80GB Hard Drive.
<b>MX-M753U</b>	Includes 8.5" Color Display, Standard Copying, Document Filing, 150-Sheet DSPF, Auto Duplex, 2000-sheet tandem paper drawer (letter), 2 x 500-sheet paper drawers, 100-sheet bypass tray & 80GB Hard Drive.
<b>Type</b>	Multi-Function digital document system
<b>Functions</b>	Copy, print, network print, network scan, document filing and fax <sup>1</sup>
<b>Copy System</b>	Dry electrostatic transfer/Dual component developer/Magnetic brush development/OPC drums/Heat Roller fusing/Xenon lamp exposure
<b>Originals</b>	Sheets and bound documents
<b>Max Original Size</b>	11" x 17"
<b>Copy Size</b>	Min. 5 ½" x 8 ½", Max. 11"x 17"
<b>Copy Speed</b>	75 ppm;
<b>Multiple Copy</b>	Max. 999 copies
<b>First Copy Time</b>	Platen Glass:3.5 seconds <sup>2</sup> DSPF: 5.9 seconds <sup>2</sup>
<b>Warm Up Time</b>	30 Seconds or less <sup>2</sup>
<b>Magnification</b>	25% to 400% in 1% increments
<b>Original Feed</b>	150-sheet duplexing single pass feeder
<b>Scan Speed</b>	DSPF Copy. Up to 75 IPM @ 600 x 300 dpi; 53 IPM @ 600 x 400 dpi; 41 IPM @ 600 x 600 dpi DSPF Scan. Up to 75 IPM @ 200 x 200 dpi
<b>Original Sizes</b>	5 ½" x 8 ½", 8 ½" x 11", 8 ½" x 11" R, 8 ½" x 14", 11" x 17"
<b>Paper Feed System</b>	Standard: 2000-sheet tandem paper drawer (letter), (2) 500-sheet drawers (letter/legal/ledger/statement) and 100-sheet bypass tray (letter/legal/ledger/statement/envelope). <sup>2</sup> Optional: 3500-sheet large capacity tray (letter size) or 3000-sheet large capacity tray (ledger).
<b>Paper Types</b>	Paper drawers/Bypass tray: 16 lb. bond-110 lb. index; other paper types include plain, pre-printed, recycled, pre-punched, letterhead and color paper. Bypass tray also supports: 13-16 lb. bond (thin paper), 20-24 lb. bond (Monarch/Com-10 envelope), tab paper (letter size only); other types include label paper and OHP film. Large capacity tray: 16-28 lb. bond.
<b>Duplexing</b>	Standard automatic duplex copying and printing
<b>CPU</b>	Power QUICCII-MPC8533E (800MHz)
<b>Interface</b>	RJ-45 Ethernet (10/100/1000Base-T), USB 2.0 host/device
<b>Memory</b>	Copy: 512MB; Print/scan: 1GB (standard) Max: 2GB
<b>Hard Disk Drive</b>	80GB; 38GB for document filing system; 12GB for quick file folder
<b>Copy Resolution</b>	Scan: B&W/color: 600 dpi; Copy Output: B&W: 600 dpi
<b>Exposure Control</b>	Modes: Automatic Text, Text/Photo, Text/Printed-Photo, Printed-Photo, Photo, Map. Settings: auto or 9 step manual.
<b>Halftone</b>	256 gradations/2 levels (monochrome)
<b>Copy Features</b>	Scan-Once Print-Many, electronic sorting, offset-stacking, Auto Paper Sensing (APS), Auto Magnification Sensing (AMS), auto tray switching, rotation copy, reserve copy, tandem copy, book copy, margin shift, tab-paper insertion, edge erase, center erase, dual page copy, cover pages, insert pages, OHP insertion, job build, card shot, multi-page enlargement, reverse image, black-white reversal, centering, proof copy, 2-in-1/4-in1, pamphlet, photo repeat, document filing, account management, job programs, date/character/page stamp.
<b>Account Control</b>	Up to 1000 users. Supports user-number authentication (on device), login name/password (on device) or login name/password (on device via LDAP server) for Copy, Print, Scan, Fax and document management.
<b>Output Tray Capacity</b>	Main output tray (top) 250 sheets (face down)
<b>Firmware</b>	Flash ROM with local (USB) and network update capability.
<b>Configuration Method</b>	Web-based management system with user/administrator level login security, cloning (1 to N) with PAU and remote front panel access
<b>Service/Maintenance</b>	Remote front panel and remote service logs
<b>Power</b>	AC 100-127 VAC, 60Hz, 20 Amps (dedicated)
<b>Power consumption</b>	All models Approx. 1.8kW
<b>Weight</b>	All models Approx. 420 lbs.
<b>Dimensions</b>	All models Approx. 29" (w) x 27" (d) x 48" (h)

## Network Printing System (standard on N models)

<b>PDL</b>	PCL® 6/PCL5e compatible, Optional Postscript®3™, optional XPS
<b>Resolution</b>	1200 dpi x 1200 dpi, 600 dpi x 600 dpi
<b>Print Speed</b>	75 pages per minute depending on model (8½"x 11")
<b>Print Drivers</b>	Windows 2000, Windows Server® 2003, Windows Server 2008, Windows XP, Windows XP x64, Windows Server 2003 x64, Windows Server 2008 x64, Windows Vista™, Windows Vista x64, Windows 7, Windows 7 x64, MAC OS®, 9.2.2, OS-X (including 10.2.8, 10.3.9, 10.4.11, 10.5-10.5.8, 10.6-10.6.2), all MAC PPD, UNIX, Linux. <sup>1</sup>
<b>Features</b>	Continuous printing, duplex printing, pamphlet printing, N-up printing, image rotation, different cover page/last page, blank page skip, transparency inserts, tab printing, carbon copy print mode, fit-to-page, poster print, margin shift, mirror image, watermarks, overlay, confidential print, confidential batch print, print hold, proof print, bypass printing, job priority printing, print job control, tandem printing and direct printing <sup>1</sup>
<b>Direct Printing</b>	File Types: TIFF, JPEG, PCL, PRN, TXT, PDF, Encrypted PDF, Compact PDF, Postscript and XPS <sup>1</sup> Methods: FTP, Web page, E-mail and USB memory
<b>Resident Fonts</b>	80 outline fonts
<b>Interface</b>	RJ-45 Ethernet 10/100/1000 Base-T
<b>Network</b>	Windows 7, Windows 7 x64, XP, 2003/2008 Server, Vista, Novell®
<b>Environments</b>	Netware® 3x to 6x, MAC OS 9, OSX 10 to 10.6.2), Sun® OS 4.1x, Solaris® 2x, UNIX®, Linux®, SAP, AS400, Citrix® (Metaframe, Presentation Server 4, 4.5) and Windows Terminal Services.
<b>Network Protocols</b>	TCP/IP (IPv4, IPv6, IPSEC) SSL (HTTP, IPP, FTP), SNMPv3, 802.1x for Windows and UNIX. LPD and LPR for UNIX. IPX/SPX® (Novell environments), EtherTalk® and NetBEUI. AppleTalk® (Macintosh®).
<b>Printing Protocols</b>	LPR, IPP, IPPS, PAP, Raw TCP (port 9100), FTP and Novell Pserver/Rprinter
<b>Network Security</b>	IP/Mac address filtering, protocol filtering, port management, user authentication and document administration. Access Control (CAC), PKI and OCSP server authentication
<b>Security Standards</b>	IEEE-2600-2008, DoD (NISTISSP) #11, DoD 8500.2, DoD (DISA) <sup>1</sup>

## Network Scanning System (standard on N models)

<b>Max Original Size</b>	11" x 17"
<b>Optical Resolution</b>	600 dpi
<b>Output Modes</b>	600 dpi, 400 dpi, 300 dpi, 200 dpi, 100 dpi
<b>Scan Modes</b>	Color, monochrome, grayscale
<b>Image Formats</b>	Monochrome: TIFF, PDF, Encrypted PDF, XPS <sup>1</sup> Color: Grayscale, Color TIFF, JPG, PDF, Encrypted PDF, Compact PDF <sup>1</sup> , XPS <sup>1</sup>
<b>Image Compression</b>	Monochrome Scanning: Uncompressed, G3 (MH), G4 (MR/MMR) Color/Grayscale: JPG (high, medium, low), High Compression PDF <sup>1</sup> , Internet FAX mode: MH/MMR (option)
<b>Scan Destinations</b>	E-mail, Desktop, FTP, Folder (SMB), USB, Internet/G3 fax (options)
<b>One-touch Dial</b>	Up to 1000 (combined scan destinations)
<b>Group Destinations</b>	Up to 500
<b>Programs</b>	Up to 48 (combined)
<b>Max. Jobs in Memory</b>	Up to 94
<b>Network Protocols</b>	TCP/IP, SSL (HTTP, SMTP, LDAP, FTP, POP3), SMB, ESMTP, 802.1x
<b>Network Security<sup>1</sup></b>	E-mail server user authentication for LDAP and Active Directory Access Control (CAC), PKI and OCSP server authentication
<b>Software</b>	Sharpdesk® document management software (1 user license)
<b>Sharp OSA Platform</b>	Application Communication Module (MX-AMX2) and external accounting module (MX-AMX3) Standard

## B&W Super G3 Fax Kit (option)

<b>Transmission Mode</b>	Super G3, G3
<b>Modem Speed</b>	33.6 KBPS <sup>3</sup>
<b>Compression</b>	JBIG, MMR, MR, MH
<b>Scanning Method</b>	Sheet fed simplex or duplex or book
<b>TX Resolution</b>	400 dpi (max.)
<b>Transmit Speed</b>	Approximately 2 Seconds with Super G3/JBIG <sup>4</sup>
<b>Auto Dialing</b>	Up to 1000 (combined scan destinations)
<b>Group Dial</b>	Up to 500
<b>Inbound Routing</b>	Forwards received fax data to E-mail
<b>Long length Originals</b>	Up to 31.5" (for transmission)
<b>Programs</b>	Up to 48 (combined)
<b>Memory</b>	8 (exclusive)
<b>Halftone</b>	256 levels

## 50-Sheet Stapler Finisher (option)

<b>Type</b>	Console stacking finisher with dual exit trays
<b>Stapling</b>	Three position; Up to 50 sheets (letter size)
<b>Hole punching</b>	Optional punch unit AR-PN4B (3-hole)
<b>Power Consumption</b>	Approx: 80 W
<b>Weight</b>	Approx: 120 lbs.
<b>Dimensions</b>	Approx: 32" (w) x 25" (d) x 45½" (h)

## 100-Sheet Stapler Finisher (option)

<b>Type</b>	Console stacking finisher with three exit trays
<b>Output Trays</b>	Upper and Lower tray: Ascend/descend offset tray Middle tray: Ascend/descend non-offset tray
<b>Stapling Media</b>	Plain paper, (letter, legal, or ledger size)
<b>Stapling Positions</b>	1 front, 1 rear, or both
<b>Power Source</b>	Supplied from main unit
<b>Stapling</b>	Up to 100 sheets (letter size) or 50 sheets (legal, ledger or mixed)
<b>Stapled Sets</b>	30 bundles or 500 sheets (letter or statement size) or 30 bundles or 250 sheets (legal or ledger size)
<b>Hole Punching</b>	Optional hole punch unit MX-PN10B (3-hole)
<b>Weight</b>	Approx: 181 lbs.
<b>Dimensions</b>	40" (w) x 30¼" (d) x 42¾" (h) (with tray extended)

## Saddle Stitch Finisher (option)

<b>Type</b>	Console finisher with dual exit trays (mounts on left side)
<b>Output Trays</b>	Upper/middle tray: Ascend/descend offset tray; Lower tray: Book tray for saddle stitch
<b>Output Capacity</b>	2000-sheets (letter), 1000-sheets (ledger, legal), 750-sheets stapled (letter), 500-sheets (ledger, legal)
<b>Stapling</b>	Up to 50 sheets (letter/statement), 30 sheets(legal, ledger, mixed)
<b>Output Delivery</b>	Face down
<b>Stapling Media</b>	Plain paper, letter/legal/ledger size or mixed
<b>Stapling Positions</b>	1 front, 1 rear, or both
<b>Saddle Stitch Function</b>	Center stitch/folding (2 staples) letter/legal/ledger paper sizes. Up to 10 sets (11-15 sheets per set)/20 sets (6-10 sheets per set)/25 sets, Max. Sets (1-5 sheets per set).
<b>Power Consumption</b>	80 W or less
<b>Hole Punching</b>	Optional hole punch unit AR-PN4B (3-hole)
<b>Weight</b>	Approx: 166 lbs.
<b>Dimensions</b>	32" (w) x 25" (d) x 45½" (h) (with tray extended)

## Optional Equipment

<b>MX-CF10</b>	Insertert
<b>MX-LC10</b>	3500-sheet Large Capacity Tray (letter)
<b>MX-LCX3N</b>	3000-sheetLarge Capacity Tray (ledger)
<b>MX-FN14</b>	100-sheet Stapler Finisher
<b>MX-FN15</b>	50-sheet Stapler Finisher
<b>MX-FN16</b>	Saddle Stitch Finisher
<b>AR-PN4B</b>	3-hole Punch Module (MX-FN15 and FN16)
<b>MX-PN10B</b>	3-hole Punch Unit (MX-FN14)
<b>MX-PB13</b>	Printer Expansion Kit (J models only)
<b>MX-PKX1</b>	Postscript 3 Kit <sup>1</sup>
<b>MX-PUX1</b>	XPS Expansion Kit (Requires MX-SHP1GBXPS)
<b>MX-SHP1GBXPS</b>	1GB Memory Upgrade (Required for MX-PUX1)
<b>MX-EBX3</b>	Enhanced Scanner Compression Kit <sup>1</sup>
<b>MX-FWX1</b>	Internet Fax Kit <sup>1</sup>
<b>MX-FXX2</b>	Fax Expansion Kit
<b>AR-PF1</b>	Bar Code Font Kit <sup>1</sup>
<b>MX-AMX1</b>	Application Integration Module <sup>1</sup>
<b>MX-AMX2</b>	Application Communication Module <sup>1</sup> (U models only)
<b>MX-AMX3</b>	External Accounting Module <sup>1</sup> (U models only)
<b>MX-NSX1</b>	Network Scanner Expansion Kit (U models only)
<b>MX-FR22U</b>	Commercial Data Security Kit <sup>5</sup>
<b>MX-EC50</b>	Card Solution Kit (CAC) <sup>5</sup>
<b>AR-D5143NT</b>	Power Filter
<b>AR-SUI</b>	Stamp Unit
<b>AR-SVI</b>	Stamp Cartridge

## Supplies

<b>MX-753NT</b>	Toner Cartridge
<b>MX-753NV</b>	Developer
<b>AR-620DR</b>	Drum

<sup>1</sup> Some features may require optional equipment.

<sup>2</sup> Paper capacity is based on letter size paper.

<sup>3</sup> Actual transmission speed and time will vary based on line conditions

<sup>4</sup> Based on Sharp Standard Test Chart with approximately 700 characters, letter size in standard resolution.

<sup>5</sup> Not available at time of launch.

<sup>6</sup> Specification may vary depending on product configuration, machine settings and operating and/or environmental conditions.

# SHARP®

