

SHARP®

HIGH-SPEED WORKGROUP COLOR DOCUMENT SYSTEMS

OPTIMAL PERFORMANCE. UNMATCHED QUALITY. TRUE MULTI-TASKING.



MX-5500N
MX-6200N
MX-7000N



"Most Secure MFP"
Award
2007



"Color Line of the Year"
Award
2006



"Innovation"
Award
2006



"Outstanding MFP
Security Solution"
2006



THE RENAISSANCE OF COLOR

MX-5500N/MX-6200N/MX-7000N

THE PERFORMANCE, RELIABILITY AND VERSATILITY LARGE WORKGROUPS EXPECT— WITH BRILLIANT HIGH-IMPACT COLOR

Designed for incredible versatility, Sharp's MX-5500N, MX-6200N and MX-7000N High Speed Workgroup Color Document Systems can easily handle the diverse needs of today's busy workgroups. With the ability to print both high-quality color and B&W, you get more function and power for large-volume tasks. These powerful 1 GHz performers deliver best-in-class features across the board—from copying, printing, scanning and emailing to faxing and storing your files. The MX Color Series also offers high-volume paper handling capabilities with an array of optional finishing features that help make a great impression as well as save time and labor. But there's more. The MX Color Series offers the latest innovation with the **Sharp OSA™ Development Platform**. Designed to boost productivity, Sharp OSA technology gives you one-touch access to your business applications right from the LCD display, offering a new realm of control and convenience. Unmatched features such as a large, color LCD display with customizable "short cut" keys, and comprehensive software utilities make these sophisticated systems easy to operate. And for unparalleled security, Sharp's Security offerings help protect your data by securing walk-up, scan and network access. With multiple levels of device protection, Sharp can help keep your documents safe—and your business ahead of regulatory compliance.





EXCEPTIONAL FEATURES FOR HIGH-VOLUME ENVIRONMENTS

Productive

Versatile

User-Friendly

Adaptable

Secure

- Performance-driven **1 GHz Multi-tasking Color Document System** with **optional EFI controller** to match your environment
- Versatile application integration with **Sharp OSA technology** enables users to access network applications right from the LCD panel
- Sharp's award-winning **multi-level document** and security offerings
- Integrated **LDAP and User Authentication** for secure access
- Customizable icon-driven **color touch-screen display**
- **One-touch ImageSEND™ technology** facilitates scans to USB devices, network folders, E-mail and more
- Standard **150-sheet Duplexing Document Feeder** with **Color Scan2™ technology**
- Large **6,600-sheet** maximum on-board paper supply (3,100 standard)
- Efficient **Cardshot, Page Stamp and Tandem Copy**
- Built-in **PCL6/PCL5c printing** with Direct Print and PostScript® 3™ option
- Standard **80 GB HDD** offers robust job spooling and enhanced Document Filing capability
- Advanced **web-based Device Management** and **on-board user manuals**
- Optional **external keyboard kit** for added convenience
- Environmentally focused; supports **Energy Star®** and **RoHS**
- Optional **Finishing, Page Inserter** and **Hole-punch** accessories to reduce paper handling and increase productivity
- A choice of **large-capacity paper trays** for high-volume workgroups
- Optimized Fax option includes **PC Faxing** and **Inbound Routing**
- **My Sharp™** web-based 24/7 training

PRODUCTIVITY-ENHANCING FEATURES



JUMP-START YOUR WORKFLOW WITH POWERFUL FEATURES AND SUPERIOR FLEXIBILITY

IMPRESSIVE PERFORMANCE

Designed for large workgroups, the new MX Color Series delivers lightning-fast output, so your workflow keeps moving. At 55/62/70-ppm in B&W and a speedy 41-ppm Color, these advanced performers don't miss a beat. With a **standard paper capacity of 3,100 sheets** (upgradable to 6,600 sheets) and a standard **150-sheet duplex single pass document feeder**, the MX Color Series can tackle large-scale projects with incredible efficiency. For high-volume workgroups, you can add the **3,000 or 3,500-sheet large capacity tray**, available in either tabloid or letter-only models. The MX Color Series makes it easy to produce booklets, proposals and presentations with **trayless duplexing, electronic sorting and integrated offset stacking**. Sharp's new **multi-tasking controller** is at the heart of it all. With blazing speed and processing power, you can get your jobs done in record time.



A 6,600-sheet online paper capacity is available with options.

DOUBLE YOUR PRODUCTIVITY WITH COLOR SCAN²

For optimum productivity, the new MX Color Series offer Sharp's award-winning **Color Scan² technology**. With simultaneous scanning of 2-sided documents, these powerful workhorses speed through duplexed originals in an instant. And since the document is scanned in a single pass, it takes half the time to process. Now it's faster and easier than ever to duplicate new employee booklets, company newsletters—virtually anything your business needs to communicate—quickly and easily.



EXTERNAL KEYBOARD OPTION FOR ADDED CONVENIENCE

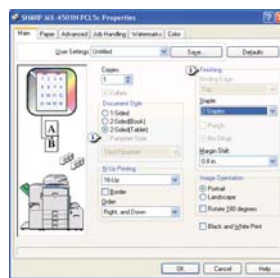
If your workgroup performs a significant amount of data entry at the LCD, you can easily add the **optional external keyboard** for more convenience. Ideal for environments that handle repetitive scanning and archiving of documents, an external keyboard can speed up the process and save time.

MORE-THAN-ROBUST DOCUMENT FILING

For even more efficiency, MX-5500N/MX-6200N/MX-7000N document systems offer convenient **Document Filing**. Now you can standardize and store frequently used files such as fax cover sheets, distribution order forms, HR forms, and more. With **30 GB of document storage capacity**, everyone can easily recall and share documents. In confidential environments, you can restrict access to select users. With private storage features, PIN-code access, and **My Folders**, your document security is well protected. And with new **Quick Folders**, you can temporarily store and retrieve documents quickly and easily. Plus, an advanced backup system ensures that your files are safe and secure.

OUT-OF-THE-BOX NETWORK PRINTING

With simple plug and play operation, the MX Color Series offer **600 x 600 dpi B&W and Color printing** right from your desktop. With advanced features including cover page printing, overlay print and pamphlet mode, your documents will rival those from professional printers. Plus, you control the production, so scheduling is never an issue. The **watermark feature** provides the ability to number the pages as you make copies, so referencing multiple-page documents is quick and easy. You can even save your



preferences for fast recall. And with the **optional Postscript driver**, you get extensive color control options, as well as convenient PDF printing, which allows you to print a PDF without even opening the file. Just send the PDF to the printer. It's that simple.

EFFICIENT CARDSHOT FEATURE

For speedy processing in healthcare and insurance environments, the convenient **Cardshot** feature saves time and resources by copying both sides of a license or ID card onto a single sheet of paper.

USER-FRIENDLY COLOR LCD DISPLAY

The unique **Customizable User Interface** allows the touch-screen to display three virtual "short-cut" keys that can be customized to provide instant access to the features that you use most often. Save valuable time and eliminate browsing through layers of menus to select features that you use regularly. These "short-cut" keys can also be customized so that different users see different "short-cuts" based on their specific needs. It is even possible to have the interface display different languages based on the user's login. Plus the color LCD touch-screen display makes the MX Color Series easy to operate, even for occasional users. With a large **10.4-inch color screen (measured diagonally)**, the intuitive, icon-driven graphics provide easy access to advanced features.

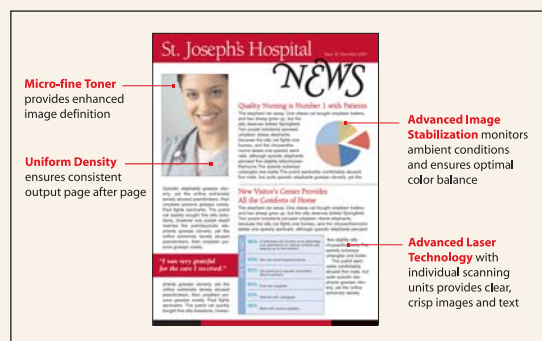


The large Color LCD touch-screen display is intuitive and easy to use. Customizable "short-cut" keys recall frequently used documents or settings in a flash.

HIGH-IMPACT, HIGH-VOLUME FEATURES

DAZZLING IMAGE QUALITY

Sharpen your business communications with detailed B&W images and **brilliant, dazzling color**. The MX Color Series can easily handle the demands of both B&W and color. Eliminate the need for separate systems and reduce office hardware and associated costs with these multi-tasking performers. Easily generate dynamic proposals, presentations and newsletters that get noticed and make a statement. With advanced **micro-fine toner technology** and **Image Stabilizing System**, color is consistent from the first page to the last, so you always make a good impression.



PROFESSIONAL-QUALITY FINISHING

The MX Color Series offers several modular finishing options to automate paper handling as well as give your documents a professional appearance. Presentations, new employee welcome kits and customized sales and marketing collateral can be easily printed and finished in-house. The optional **4,000-Sheet Finisher** speeds through large projects, giving you complete control over deadlines. The robust **Saddle-Stitch Finisher** option delivers **3-position stapling, center folding, 50-sheet stapling capacity**, and more. To add flair and organization to your jobs, you can insert covers, tabs or special media with the **Post-Sheet Insertter**. For even more versatility, add the hole-punch unit for two- and three-hole punching.



MX-FNX3
4,000-sheet Finisher



MX-FNX4
4,000-sheet
Saddle-Stitch Finisher

A choice in finishers with optional hole-punching and inserting makes it easy to reduce costs on professional printing and finishing.



ENVIRONMENTALLY FRIENDLY

Designed to minimize downtime and reduce environmental impact, the MX Color Series' micro-fine toner technology offers longer replacement intervals and utilizes less packaging material. Plus, these models are **ENERGY STAR®** and **RoHS qualified**. In fact, new modes to reduce operational power gives the MX Color Series

one of the lowest power consumption ratings in the industry.



In addition to being environmentally friendly, the front-loading color-coded toner cartridges are easy to replace. You can even change the black toner cartridge while the system is running.



MX-LCX2
3,500-sheet
Large Capacity Tray



MX-LCX3
3,000-sheet
Large Capacity Tray

Select from two large capacity trays: The MX-LCX2 holds 3,500 sheets of letter-sized paper. The MX-LCX3 accommodates 3,000 sheets and adjusts to letter-R, legal, or tabloid-sized papers.

ADVANCED DOCUMENT SECURITY PROTECTS YOUR ASSETS



"Most Secure MFP"
Award
2007



"Outstanding MFP
Security Solution"
2006

To help protect your data, the MX Color Series offers several layers of security, making Sharp the optimum choice to protect employee privacy and intellectual property. As the leader in office equipment security, Sharp makes it easy for any business or government entity to safely deploy digital copying, printing, scanning and faxing.



AUTHORITY GROUPS

Advanced account management enables administrators to set authority groups for access to features of the MX Color Series. Administrators can control which department, for instance, has full access to copying, printing, scanning and/or fax. Walk up users enter a code, Local Name and Password, or LDAP User Authentication to access their features assigned to their group.



DOCUMENTS REMAIN CONFIDENTIAL

To help protect your printed documents from unauthorized viewing, the MX Color Series offers encrypted PDF files for printing and scanning as well as **Confidential Printing** that requires users to enter a PIN code in order to print a queued document. Additionally, **Secure Fax Release** ensures received fax documents are held in memory until an authorized user enters a PIN code. So compliance with healthcare regulations like HIPAA is easier.



NETWORK SCANNING ACCESS

To help protect your network from unauthorized E-mail communications, the MX Color Series supports **User Authentication**, requiring users to login before performing any network scanning operations.



CONTROL DEVICE ACCESS OVER THE NETWORK

To help restrict access to the device over the network, the MX Series offers **Secure Socket Layer** (SSL Encryption), IP/MAC address filtering, protocol enable/disable and **port management** for maximum security.



DATA ERASE AND ENCRYPTION

To help protect your data, the MX Color Series offers an optional data security kit that encrypts document data using **AES (Advanced encryption standard) encryption**. Additionally, the data security kit erases the temporary memory on the hard drive by overwriting the encrypted data up to seven times, offering an unprecedented level of assurance.



TRACKING AND AUDITING INFORMATION

Legislation and industry policies require companies to be more aware of information flow from their offices. Sharp offers both built-in and additional hardware/software which allows users to control, access and track usage of each device on the network.

These scalable security offerings aim to protect your intellectual property, preserve confidential information and help your business to meet regulatory requirements, such as the Health Insurance Portability and Accountability Act (HIPAA), and the Gramm Leach Bliley Act (GLB). For additional information visit:
www.sharppusa.com/security

VERSATILE SCALABILITY

LEVERAGE YOUR INVESTMENT WITH INCREASED FUNCTIONALITY

The MX Color Series modular design enables you to fully leverage your investment in data management infrastructure. While others are limited to a small circle of productivity, Sharp's newest innovation, **Sharp OSA™ technology**, allows users to utilize the power of their back-end systems **right from the control panel**. It's really a new way of thinking with "*power at the panel*" for more automated tasks and a streamlined workflow.

STREAMLINE DOCUMENT WORKFLOW

Virtually seamless to the user, Sharp OSA technology can help save time and increase the efficiency of everyday tasks. This technology allows the MX Color Series to display choices that were once only available on a desktop PC. With one-touch access to business applications via Sharp OSA integration, you can start and finish a document distribution task in just a few steps.

ROBUST PERFORMANCE

The Sharp OSA Development Platform is the logical choice to compliment your existing infrastructure by providing fast, flexible access to documents and applications—no matter where you are in the office. With tighter integration with network security and accounting applications, you can control access and track jobs more efficiently. A comprehensive set of management tools delivers the ability to control your workflow easily, efficiently, and more securely.

EASY TO CUSTOMIZE

Sharp OSA technology also provides another crucial component to your workflow: customization. With the ability to personalize applications and processes specific to your business, Sharp OSA technology can help eliminate redundancy and streamline workflow, helping to save time and optimize productivity. And since Sharp OSA technology utilizes industry-standard network protocols such as SOAP, XML, and XHTML, third-party software developers can deliver customized solutions to your business faster than ever.

SHARP OSA TECHNOLOGY AT A GLANCE

- Automate tasks and save time with seamless integration between the MX Color Series and network applications
- Minimize set-up and installation of multiple Sharp products with centralized applications
- Helps eliminate repetitive tasks and streamline workflow, increasing efficiency
- Maximize your return on investment with tighter integration among IT assets
- Deploy new solutions faster with industry-standard programming

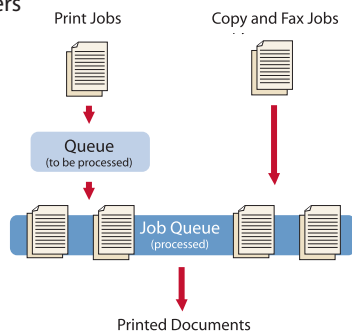


DOCUMENT WORKFLOW & DISTRIBUTION

STREAMLINE YOUR WORKFLOW WITH ADVANCED DISTRIBUTION FEATURES

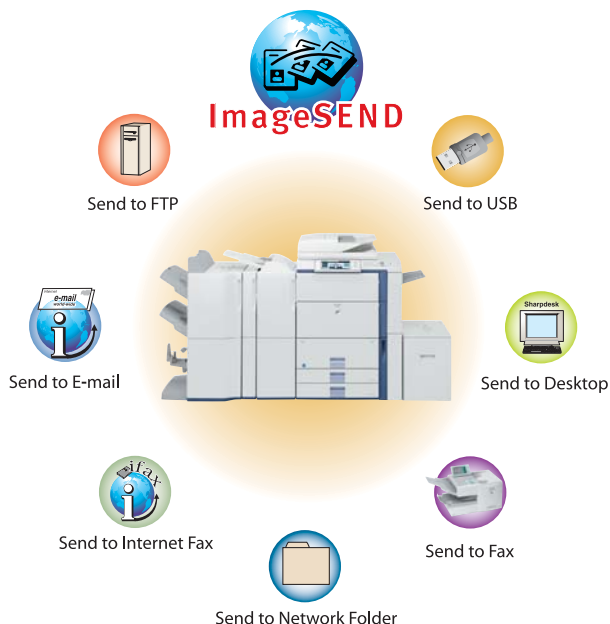
TRUE MULTI-TASKING WITH DUAL PROCESSING

The new MX Color Series features a **high-performance, 1 GHz multi-tasking controller** that delivers copy, fax and print jobs continuously for optimum efficiency. Other controllers only perform one operation at a time. But the MX Color Series continually processes incoming jobs even while existing jobs are output. The result? A workflow that never slows down—even at crunch time.



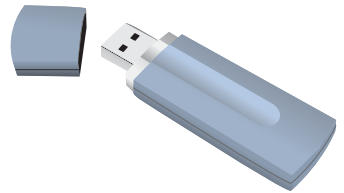
INTEGRATED NETWORK SCANNING

With Sharp's powerful **ImageSend** technology, you get one-touch distribution features that centralize document workflow, reduce mail costs and save time. With up to **seven destinations**—E-mail, Desktop, FTP, Network Folder (SMB), USB, Fax and internet Fax—getting your document where it needs to go is as easy as pushing a button. High-volume workgroups will appreciate the **Send to Group** mode that allows you to mix group broadcasts to E-mail, Fax, and Internet Fax for increased efficiency.*



CONVENIENT USB SUPPORT

The MX Color Series also supports popular USB memory devices for today's on-the-go professionals. Scan files directly to a USB device, or simply plug in and print directly without creating network traffic by copying files. Most popular industry-standard file formats are supported, including TIFF, JPEG, PDF, and Encrypted PDF.*



SECURITY AT YOUR FINGERTIPS

Get the control and security you need to help minimize risk in today's changing office environment. The MX Color Series supports **LDAP** with integrated **User Authentication**. Workgroups can set up rights to features and functions, providing unprecedented control over usage and costs. With controls for up to three levels of identification, you can protect sensitive documents from being scanned, faxed or E-mailed—so your data is not compromised.

CONVENIENT AND SECURE EMAIL DISTRIBUTION

With LDAP, there's no need to manually enter a recipient's complete email address. Simply enter the first few characters and the MX Color Series automatically searches and displays a list of matching names. It's efficient, and it's secure. And with the **Unique File Naming** feature, you can enter specific filenames with custom subject fields, so it's easier to recall files when you need them.

POWERFUL SUPER G3 FAXING

The optional **Super G3 Fax Kit** delivers lightning-fast faxing for busy workgroups. Integrated **PC Faxing** allows you to fax a document directly from your desktop. With the Finisher installed, you can collate, staple and/or copy inbound faxes, so they're ready to distribute, saving time. **Inbound Fax Routing** allows you to set parameters so that faxes can be sent directly to your email address, giving mobile users the ability to check on incoming orders, purchase orders, and more. Settings can be easily managed through the user-friendly web page. For additional savings, the optional B&W Internet Fax expansion kit can help reduce long-distance phone costs.



*Some destinations require optional equipment

INTEGRATED, USER-FRIENDLY SOFTWARE TO MANAGE DOCUMENT WORKFLOW

Despite the MX Color Series' sophisticated feature set, the systems are exceptionally easy to operate. To help you make the most of your investment, Sharp designed the Administration Utility Suite, a collection of easy-to-use tools that simplify functionality for both administrators and desktop users. This broad suite of tools delivers all the control you need from walk-up access to complex network management.

THE MX COLOR SERIES WEB PAGE: YOUR GATEWAY TO ACCESS

Manage advanced MX Color Series' features right from your desk with Sharp's easy-to-use **Secure (SSL) Web Page**. Administrators can set personalized scanning destinations, profiles, web-links, and fax distribution features. You'll also gain access to **My Sharp**, a customized website for on-demand training and support to help you maximize the features of your Sharp MFP.



SEE THE WHOLE PICTURE WITH PRINTER ADMINISTRATION UTILITY (PAU)

Designed to simplify administrator tasks, PAU allows you to view devices on the network, install features and distribute drivers over the network—all from a single interface. Monitor device usage for both B&W and Color jobs, set printing priorities or move jobs to different devices to expedite workflow.

CHECK IT OUT BEFORE YOU QUEUE WITH PRINTER STATUS MONITOR

Designed for both managers and desktop users, Printer Status Monitor allows you to view printer conditions, check paper levels, toner and more all through an easy-to-use interface. You can be notified when your large job is done right at your desktop.

ORGANIZE AND EDIT SCANNED FILES WITH SHARPDESK™ SOFTWARE

With Sharpdesk document management software, you can easily and securely (using FTPS) integrate scanned documents into your everyday workflow. Organize, edit, and convert—even combine several scanned files into one document. Full text search capabilities are available so users can retrieve documents faster than ever.

MAXIMIZE PRODUCTIVITY WITH REMOTE EMAIL DIAGNOSTICS

Now managers can stay on top of device productivity. Key operators can automatically receive meter reads and specific diagnostic information about the MX Color Series at their desktops.



Embedded Web Page



Printer Administration Utility



Printer Status Monitor



Sharpdesk™

OPTIONAL EFI™ FIERY® CONTROLLER



FEATURE-RICH PERFORMANCE FOR GRAPHIC-INTENSIVE WORKGROUPS

THE OPTIONAL EFI FIERY CONTROLLER AND GRAPHIC ARTS PACKAGE

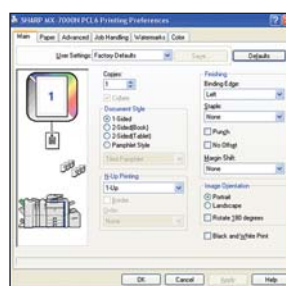
Best-in-class functionality combined with high-quality, on-demand color make the MX-6201N/7001N Series the perfect compliment to design firms, central reprographic departments, pre-press professionals and related marketing services organizations. Configured with the optional EFI Fiery Controller, the MX-6201N/7001N Series delivers state-of-the-art color control and software enhancements that streamline workflow and make it easier to predict color output. Packed with a sophisticated set of tools and a blazing-fast **2.0 GHz processor**, the powerful EFI Fiery

Controller accelerates memory-intensive processing, minimizing document traffic and bottlenecks. Effortless to control and virtually seamless to users, the EFI Fiery option delivers consistent, precise output for the most demanding applications—yours.



USER-FRIENDLY SOFTWARE

The EFI Fiery driver provides **efficient and organized access** to print functions and settings through an intuitive and familiar



interface. Pop-up menus display sub-menu choices in an easy-to-navigate tabbed format. Integrated features like **Drag-and-Drop Watermark, Job Monitor** and **Booklet Maker** help you produce complex jobs without the purchase of third-party software, so you can handle the most sophisticated projects with the ease of a pro.

SEAMLESS INTEGRATION WITH YOUR INFRASTRUCTURE

Designed to connect seamlessly within your existing network environment, the EFI Fiery controller provides an intuitive and flexible platform to **manage the entire document printing process from a single interface**. All standard network protocols are supported, simplifying installation and deployment. You also get advanced security features to manage various levels of user access. With **IP filtering, Port Blocking, Secure Erase** options and more, the EFI Fiery controller delivers all the features you need to remain compliant in today's changing business landscape. And with Fiery **WebTools™ utility software**, users can access scanned files, jobs and devices through a single web page.



The EFI Fiery interface features a simplified tabbed structure that is easy for both occasional users as well as the most demanding operators.

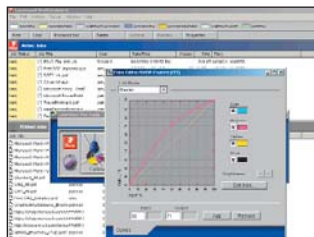
FIERY CONTROLLER ACCESSORIES

- EFI Desktop Pro® Software
- EFI Graphics Arts Package Software (Includes Spot-On®, EFI Hot Folders/Virtual Printers, and Auto Trapping)
- EFI Impose™ Fiery Edition
- EFI Color Profiler
- PrintShop Mail-Fiery® Edition
- PageFlex Persona-Fiery® Edition
- EFI Secure Erase

EXPEDITE WORKFLOW WITH VERSATILE EFI SOFTWARE

COLORWISE® SOFTWARE

In production-oriented environments, EFI Fiery ColorWise software provides accurate, consistent color, regardless of platform, application or media. Automatic, in-RIP processing spools jobs to the controller, **resulting in improved workflow**. Parameters are easy to set and save, so even casual users can use the software confidently. Pre-set profiles can be applied to individual jobs, resulting in more consistent color quality.



COLOR PROFILER (OPTIONAL)

The optional Fiery Controller makes it easy to match and save data that ensures that colors print consistently on virtually any device in the organization. Sophisticated tools can generate printer profiles for every printer on your network, drastically **reducing the time spent making color adjustments**. The Color Profiler kit also **provides more realistic color** on CRT and LCD monitors, so you can better predict that the color you see will match the color on printed documents.



COMMAND WORKSTATION™ SOFTWARE AND WEBTOOLS

Simplify centralized print management in large-scale enterprises. With extensive features, administrators can monitor devices, or add, delete and prioritize jobs to optimize workflow in busy workgroups. With WebTools utility software administrators and users can **remotely access features** via the Internet to better manage jobs for greater efficiency.

FREEFORM™ SOFTWARE

Take advantage of one-to-one marketing opportunities with **FreeForm**. Now you can get variable data printing options in a scalable, easy-to-use interface. The industry's leading variable data printing solution, FreeForm software works from almost any application and integrates seamlessly with most variable data applications, providing a cohesive workflow with improved productivity.

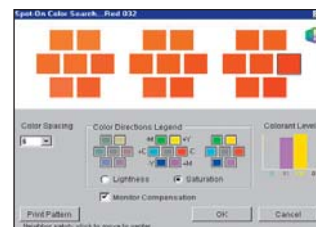


HOT FOLDERS/VIRTUAL PRINTERS (OPTIONAL)

For faster, error-free printing, the optional Hot Folders utility can **reduce set-up errors** by automating sophisticated tasks. Now users can easily perform beyond their level of expertise, making it easy to keep up with demand in busy workgroups.

SPOT-ON® COLOR SOFTWARE (OPTIONAL)

Perfect for pre-press environments, this handy utility helps operators edit CMYK/RGB values with easy-to-use calibration tools, so the color matches the printed output.



THE MX COLOR SERIES
IT'S A WHOLE
NEW LEVEL
OF PRODUCTIVITY

MX-5500N/MX-6200N/MX-7000N SPECIFICATIONS

Main Specifications

Base Models	High-speed color multifunction digital document system; 1 GHz multi-tasking controller; 80 GB HDD with document filing; PCL5c/PCL6 network printing/scanning. Scan ² single-pass duplexing feeder, auto duplex, 3,100-sheet standard paper capacity
Functions	Copy, print, network print, network scan, document filing, Sharpdesk [™] and fax option ¹
Copy System	Laser, Dry Transfer, Organic Photo Conductor Ultra-Fine Toners/Developers, Magnetic & Heat Process
Copy Size	Input: Min. 5 1/2" x 8 1/2", Max. 11" x 17" Output: Envelopes, Letter, Letter-R, Legal, Ledger & 12" x 18"
Copy Speed	MX-5500N: 55 PPM B/W & 41 PPM Color MX-6200N: 62 PPM B/W & 41 PPM Color MX-7000N: 70 PPM B/W & 41 PPM Color
First Copy Time	Platen glass: 4.5 seconds B&W and 8.4 seconds Color (MX-5500N/MX-6200N) 4.0 seconds B&W and 8.8 seconds Color (MX-7000N)
Warm Up Time	Approximately 360 Seconds
Copy Data	25% to 400% Zoom (1% increments), 25% to 200% (DSPF); 9 R/E presets; 999 Continuous Copy
Scanning	Up to 65 pages/minute with 2-sided B/W originals at standard resolution (includes Fax & Internet-Fax). Up to 35 pages/minute with Color Copy or Scan originals at standard resolution
Original Feeder	Duplex Single Pass; 150-sheet capacity (using 20 lb. bond) Sizes: 5 1/2" x 8 1/2", 8 1/2" x 11", 8 1/2" x 11", 8 1/2" x 14", 11" x 17" (13-34 lb. bond)
Paper Feed	Standard: 2,000-sheet drawer (letter) and two adjustable 500-sheet drawers (letter, legal, ledger, 12" x 18", statement size: weights up to 110 index [209 GSM]), 100-sheet bypass tray. Optional: 3,500-sheet large capacity tray (letter) or 3,000-sheet large capacity tray (letter, legal, ledger or 12" x 18")
Paper Types	Paper drawers and large capacity tray: 16-28 lb. bond paper Other paper types include plain, pre-printed, recycled, pre-punched, letterhead and color paper.
Bypass Tray	Capacity: 100 sheets (letter, legal, ledger, statement, 12"x18" & envelope size) Categories: Plain paper (16-28 lb. bond 60-105 gsm), Heavy paper (28-68 lb. Bond / 140 Index / 106-256 gsm), Envelope (20-24 lb. bond / Monarch / Com-10), Tab paper (letter only). Other types include label stock, gloss paper, pre-printed, recycled, pre-punched, letterhead, color, and OHP film.
Output Tray	Main output tray (top) 250 sheets (face down)(option); ¹ Standard: Right-side tray 100 sheets (face down)
Duplexing	Standard automatic duplex copying and printing of up to 110 Index
Interface	Ethernet (10/100BaseT), USB 2.0 (host port), USB 2.0 (device port)
Memory	Standard 1 GB (copier memory) 896 MB (printer/network scanning) memory
Hard Disk	80 GB HDD; Document Filing: 40 GB • Main/Custom: Up to 4,200 pages or 3,000 files • Quick Folders: Up to 1,400 pages or 1,000 files
Resolution	Scan: Monochrome/Color: Max 600 DPI; Copy Output (B&W/Color): Max 600 DPI
Halftone	Equivalent to 256 gradations/2 levels (mono)
Color modes	Auto Color Selection, Full Color, B/W, Dual & Single Color Modes
Copy Features	Scan-once Print-many (Electronic Sorting), Offset-stacking, Auto Color Selection (ACS), Auto Paper Selection (APS), Auto Magnification Selection (AMS), Auto Tray Switching, Rotation Copy, Job Reservation, Tandem Copy, Book Copy, Margin Shift, Tab-paper Insertion, Edge Erase, Center Erase, Dual-page Copy, Cover Pages, Insert Pages, OHP Insertion, Job Build, Card Shot, Mirror Image, B/W Reversal, Centering, Proof Copy, 2-in-1, 4-in-1, Pamphlet, Photo Repeat, Multi-page Enlargement, Document Filing, Account Management, Job Programs, Stamp Mode (Date / Text / Page B&W / Color) ¹
Accounts	Up to 1,000 users. Supports user-number authentication (on device), login name/password (on device) or login name/password (on device via LDAP or other servers)
Firmware	Flash ROM update via USB and/or network
Power Source	AC 100-127 VAC, 60 HZ, 20 Amps
Power	Approx Max: 1.8k; Sleep Mode: 13W Low Power Mode: 262W (MX-5500N), 289W (MX-6200N), 320W (MX-7000N)
Weight	Approximately 463 lbs.
Dimensions	31-5/16"(w) x 28-9/64" (d) x 48-7/32" (h)

Network Printing System (standard)

Emulation	PCL6 / PCL5c compatible, optional PS3
Resolution	1,200 dpi (monochrome), 600 DPI, 300 DPI ¹
OS Support	Windows [®] 98, Windows Me, Windows XP, Windows NT [®] 4 (SP5 or later), Windows 2000, Windows Server [®] 2003, Windows Vista [™] , Unix [®] , Novell [®] NetWare [®] 3. x/4.x/5.x, MAC OS [®] 9.x, MAC [®] OSX
Software	Print drivers, Printer Status Monitor and Printer Administration Utility
Features	Continuous, Duplex, Pamphlet, N-up, Image Rotation, Different Cover Page/Last Page, Transparency Inserts, Tabs, Carbon-copy Print, Fit-to-page, Poster, Margin Shift, Mirror Image, Watermarks, Overlay, Confidential, Confidential Batch, Release from Hold, Proof, Bypass, Job Priority, Job Control, Tandem and Direct Printing (Note: some features not available on certain print drivers) ¹
Direct Printing	File Types: TIFF, JPEG, PCL, TXT, PDF, Encrypted PDF, and PS (PS Expansion Kit required) ² Methods: FTP, Web page, Email and USB memory
Interface	Ethernet; 10/100 BaseT; USB 2.0
Print Drivers	Windows 98, Windows Me, Windows NT4.0 (SP5 or later), Windows 2000, Windows XP, Windows Server 2003, Windows Vista, MAC PPD (optional), MAC OS9, MAC OSX
Protocols	TCP/IP for Windows and Unix environments including HTTPS , IPPS, FTPS, SNMP(v3), POP3S, SMTPS, IPX/SPX for Novell and Ethernalk for Macintosh [®] environments
Print Protocols	LPR, IPP, PAP, Raw TCP (port 9100), FTP, Novell Pserver/Rprinter
Security	SSL, IPP/IP/MAC address filtering, protocol filtering, port management and user authentication with account control

Network Scanning System (standard)

Scan Output	Resolution: 600, 400, 300, 200 or 100 DPI
Image Formats	Monochrome: TIFF, PDF, Encrypted PDF Color / Grayscale: TIFF, JPG, PDF, Encrypted PDF Internet Fax (option): RIFF-FX, TIFF-F, TIFF-S
Compression	Mono: Uncompressed, G3 (MH), G4(MR/MMR) Color/Grayscale: JPEG (high, middle, low) Internet Fax: MH/MMR (option)
Destinations	E-mail, Desktop, FTP, Folder (SMB), USB memory, Internet fax (option), Super G3 fax (option)
One-Touch	Up to 999 destinations (combined with scan destinations) and up to 500 Groups
Programs	48 Total
Scanning Protocols	TCP/IP (includes SMTP, LDAP, FTP, SMB, SMTPS, POP3S, FTPS)
Security	SSL, user authentication with account control, comprehensive access control, e-mail Audit control and Document Administration.
Configuration	Web-based management; user/administrator level login security
Method	with 32 alpha-numeric characters
Software	Sharpdesk desktop document management software (1 user license) with secure FTPS support

B&W Super G3 Fax Kit (option)

Transmission	Super G3, G3 (33.6 KBPS) with JBIG, MMR,
Data	MR or MH Compression by sheets fed simplex, duplex or off the glass; Max 400 DPI (ultra-fine) at approximately 2 seconds; JBIG ¹
Auto Dialing	Up to 999 destinations (combined with scan destinations) and up to 500 Groups
Inbound Routing	Forwards received fax data to Email
Originals	Up to 31.5" (for transmission)
Programs	48 (combined)
Memory	8 MB (exclusive)
Features	Quick on-line transmission, direct transmission, F-Code transmission/reception, rotate transmission, anti-junk fax reception, automatically staple received faxes, secure fax release, out of paper memory reception, auto redial, 2-in-1 transmission, duplex reception transaction reports, activity reports and PC fax ¹
Security	Secure fax release, junk fax filter and separation between fax lines and network ports.

3-Position Finisher (option)

Type	Console finisher with dual exit trays
Output Capacity	Upper Tray: 1,550 sheets (letter size, non-stapled) Lower Tray: 2,450 sheets (letter size, non-stapled)
Staple Positions	1-point front, 1-point back or 2-point stitching
Output Data for stapling	Face down; 50 sheets (letter) or 30 sheets (mixed sizes) 20 lb. Bond; Maximum: 48 sheets (20 lb. Bond) + 2 cover sheets (140 Index)

Saddle-Stitch Finisher (option)

Type	Console finisher with dual exit trays (mounts on left side of host machine)
Output Trays	Upper tray: Offset stack tray; Lower tray: Book tray for saddle-stitch
Output Capacity	Upper tray hold 1,550 sheets and Lower Tray holds 2,450 sheets (letter size-non stapled)
Output Data for Stapling	Face down, 50 sheets (letter size - 20 lb Bond); face down, 30 sheets (Mixed types/sizes of the same width - 20 lb Bond); Max: 48 sheets 20 lb Bond with 2 covers (140 Index)
Saddle-Stitch	Up to 15 sheets (20 lb Bond); Up to 14 sheets (20 lb Bond) plus one page of 140 Index; Max Sets - 25 bundles (1-5 sheets), 20 bundles (6-10 sheets), 10 bundles (11-15 sheets)
Punching	Optional hole punch unit MX-PNX2B (2 holes/ 3 holes)

Paper Pass Unit (option)

Type	Installed into main unit (required for all output options)
-------------	--

Large Capacity Tray (option 1)

Type	Large Capacity Paper Feed Desk
Paper Size	Letter, Letter-R, Legal, Ledger or 12" x 18"
Capacity	Max 3,000 sheets
Paper Types	Plain paper, pre-printed, recycled up to 110 index (209 GSM)

Large Capacity Tray (option 2)

Type	Large Capacity Paper Feed Desk
Paper Size	Letter Size
Capacity	Max 3,000 sheets
Paper Types	Plain paper, pre-printed, recycled, letterhead, pre-punched and colored paper up to 110 index (209 GSM)

Punch Unit (option)

Type	Floor Style Module
Ability	3-hole (portrait), 2-hole (short edge)
Dimensions	4-9/16" (w) x 23-5/8" (d) x 39-3/16" (h)
Weight	17.6 lbs.

Inserter Unit (option)

Type	Floor Style Module
Productivity	Singles: 36 sheets/minute, Reversed:25 sheets/minute (letter size)
Capacity	100 sheets (20 lbs Bond)
Dimensions	17-15/16" (w) x 23-7/16" (d) x 41-11/32" (h)
Weight	Approximately 50.7 lbs.

Optional Equipment List

MX-LCX2	Large Capacity Letter Tray
MX-LCX3	Large Capacity Ledger Tray
MX-FNX3	Finisher (three-position stapling, 4,000-sheet stacking)
MX-FNX4	Saddle-stitch Finisher (three-position stapling, saddle-stapled, 4,000-sheet stacking)
MX-PNX2B	Hole Punch Unit (requires MX-FNX3, or MX-FNX4)
MX-PEX2	Fiery Controller (includes PostScript 2)
MX-RBX2	Paper Pass Unit (required for MX-FNX3, MX-FNX4)
MX-CFX1	Inserter (requires MX-FNX4 or MX-FNX3 + MX-PNX2B)
MX-PKX1	PostScript 3 Kit
MX-FWX1	Internet Fax Expansion Kit
MX-FXK1	Facsimile Expansion Kit
MX-AMX1	Application Integration Module
MX-AMX2	Application Communication Module
MX-AMX3	External Accounting Module
MX-FRX3U	Data Security Kit
AR-PF1	Bar Code Font
MX-USX5	Sharpdesk -5 User License Kit

Supplies

MX-70NTBA	Black Toner Cartridge
MX-70NTCA	Cyan Toner Cartridge
MX-70NTMA	Magenta Toner Cartridge
MX-70NTYA	Yellow Toner Cartridge
MX-70NVBA	Black Developer
MX-70NVSA	Cyan/Magenta/Yellow Developer
MX-70NRBA	Black OPC Drum
MX-27NRSA	OPC Drum for Cyan/Magenta/Yellow

¹ Some features require optional equipment
² 1,200 DPI and Postscript Printing requires optional Postscript3 Expansion Kit
³ Actual transmission time will vary based on line conditions.
Based on Sharp Standard Test Chart with approximately 700 characters, letter size in standard resolution



SHARP[®]

SHARP ELECTRONICS CORPORATION
Sharp Plaza, Mahwah, NJ 07430-2153
1-800-BE-SHARP • www.sharpusa.com

Design and Specifications subject to change without notice. Sharp, Sharp OSA, Sharpdesk, My Sharp and all related trademarks are trademarks or registered trademarks of Sharp Corporation and/or its affiliated companies. Windows, Windows NT, Windows Server and Windows Vista are trademarks or registered trademarks of Microsoft Corporation. All other trademarks are the property of their respective owners.